



# PRESIDENT PARK

## At Home in the City

**S**ituated on the very trendy and cosmopolitan Sukhumvit Soi 24, President Park Serviced Apartment is among the high-rise structures of one of the city's most upscale neighborhoods. With the BTS Skytrain just minutes away along with many major motorways, these luxurious apartments are conveniently located and ideal for leisure seekers, corporate business executives or even those simply looking for a getaway within the city.

With 228 spacious suites available, guests may choose from the Executive Studio (36 sqm), Orchid Suite (80 sqm), Carnation Suite (55 sqm) and Deluxe Studio (43 sqm). Recently renovated and redesigned, the Orchid Suite is decorated with deep dark earth tones while the beige colored sofas and burnt orange accessories give the living space balance. The floor to ceiling windows inside the bedrooms make up an entire corner of the room. Teak wood doors inside and outside of the suites add a touch a Thai tradition.

Although the suites vary in size, they all boast the high-end amenities the seasoned traveler has come to know and expect. Home theater systems with LCD televisions and DVD players and ensuite wireless broadband Internet access are available. As the President Park wants its guests to feel completely at home, the in-room kitchens offer appliances such as





refrigerators, microwave ovens and electric hot plates. In addition, cooking utensils, dining and kitchenware with cutlery and glassware are also available.

Each suite is equipped with electronic key cards and door locks and personal electronic safes. Regardless if guests choose to stay for short or long term, daily maid services are included along with linen service and laundry and dry cleaning services. For those who'd rather take a hands-on approach, there are washer-dryers available in selected suites including the Orchard and Carnation. Both iron and ironing boards are available in all suites.

To add to its supreme convenience, President Park offers its guests state of the art facilities. The brand new fitness center is located on the 6th floor and is fully equipped with cardiovascular machines, free weights, weight machines and roomy stretching areas. Along with the fitness center, the Club Lounge, also on the 6th floor, recently opened on 17 March 2010.

Guests staying in the suites may access the club absolutely free of charge while those in the studio suites, may utilize it for an additional 400 THB per day. Once inside the club lounge, enjoy refreshments and snacks along with a complimentary happy hour from 5.30pm-7pm. This relaxing lounge is adorned with colorful carpeting, classic furniture and an outdoor deck for evening drinks under the stars. The club is open from 6am-10pm, which makes it suitable



## Reception

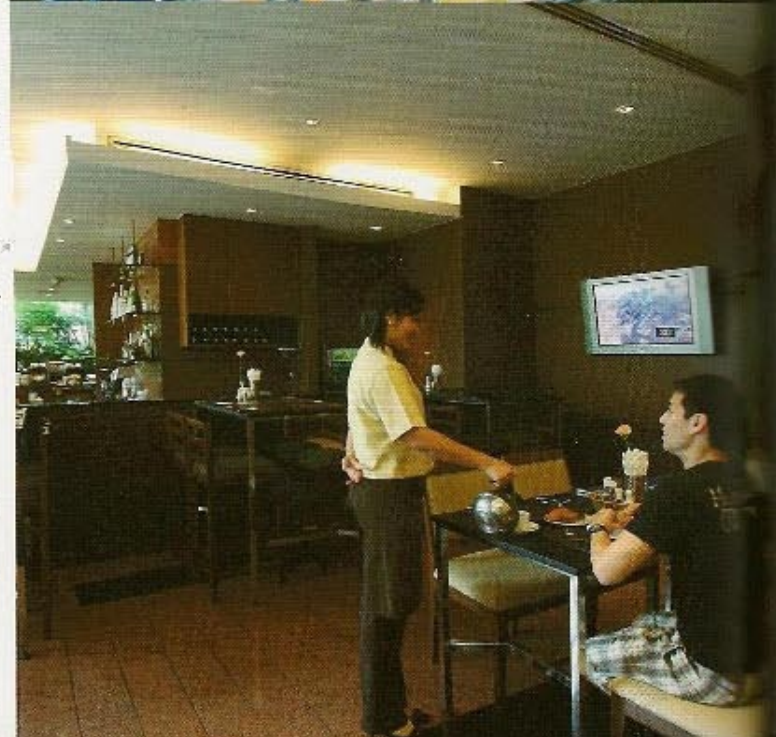


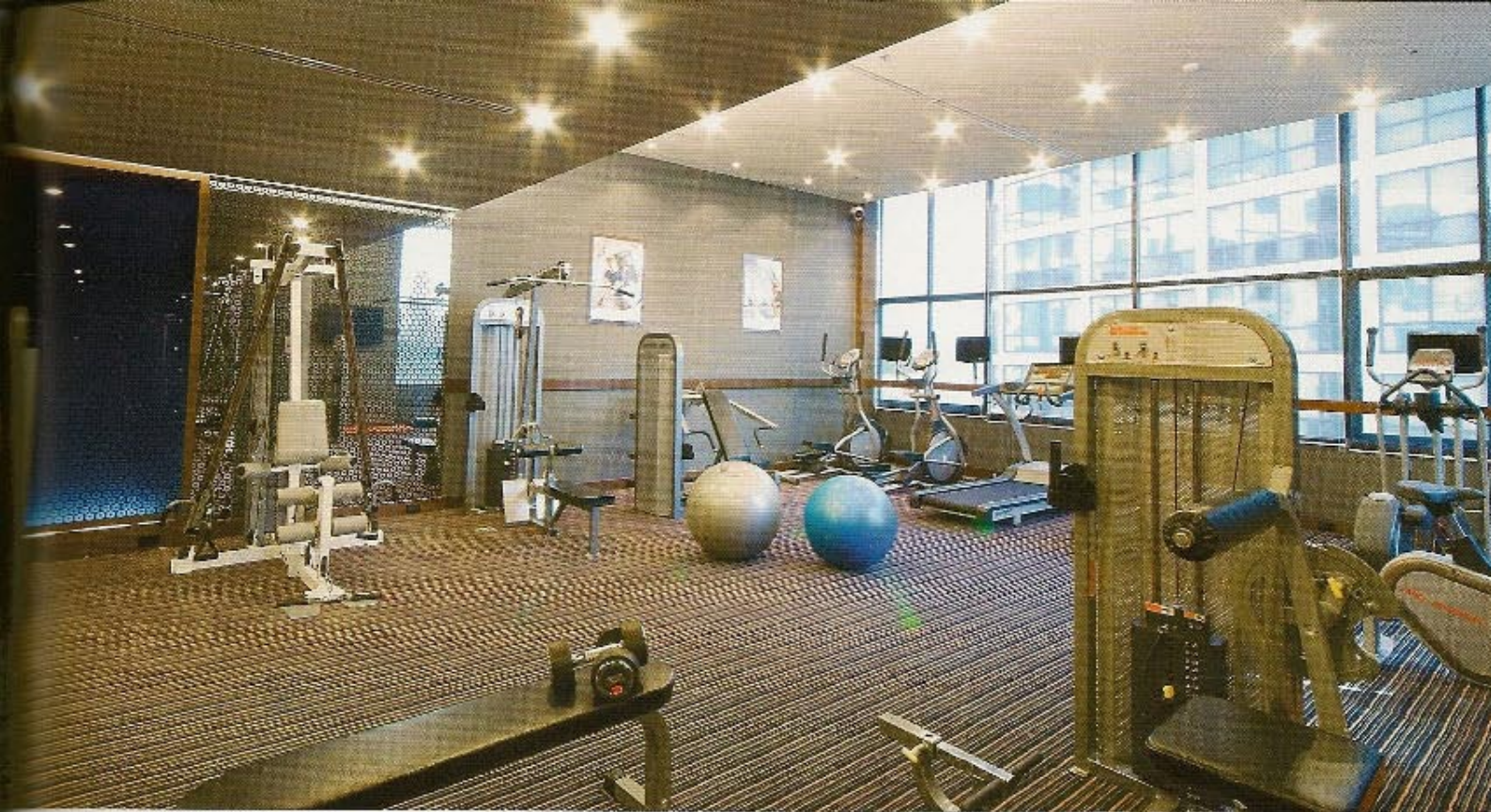
for breakfast or an after dinner cocktail. The internet corner is also located within the area.

Along with 24-hour in-room private dining, guests may also visit the Baan President Restaurant and Bekku Japanese Restaurant for all their culinary needs. Baan President Restaurant is the property's signature eatery and offers exceptional Thai cuisine along with international dishes for breakfast, lunch and dinner. For the fried food enthusiasts, Bekku Japanese Restaurant specializes in a variety of deep-fried Japanese delicacies. Wherever your taste buds should lead you, there's something for everyone.

While the fitness center and lounge is available at the President Park, guests also have the option of visiting and utilizing the Capitol Club adjacent to the property. Within the Capitol Club, are the three separate swimming pools, one for the kiddies and the other two for adults. There are also classes such as yoga and rock climbing available for an additional charge.

Other exceptional services afforded to guests of the President Park include a fully equipped business center. Checking emails, sending faxes and even conducting meetings can all be done with ease. The 24-hour reception, maintenance and security are on-hand in case of any last minute needs or emergencies. With the Emporium Shopping Center and Phrom Phong BTS Station just up the road, the property's Tuk Tuk shuttle service can deliver guests to either destination within a few short minutes. For those arriving with their own private transportation, there is a secure and





covered parking facility available.

The President Park was conceptualized with a specific timeless and classic feel. Whether it's a short or long-term stay, guests are meant to feel as though they never left home. By providing comfortable living spaces, lounge areas, exercise facilities and business facilities and elegant dining options, the needs and wants of everyone from the expat professional to the leisure seeker are easily accommodated. Just 30 kilometers from Suvarnabhumi International Airport, be sure to request a chauffeur driven limousine into the city to start your experience off on a memorable note.

**President Park**

95 Sukhumvit Soi 24, Bangkok 10110, Thailand

Tel: 02 661 1000

Fax: 02 661 1070 - 71

Email: [enquiry@presidentpark.com](mailto:enquiry@presidentpark.com)

Website: [www.presidentpark.com](http://www.presidentpark.com)

